


This function is to rename the AMP's friendly name displayed on the Bluetooth music source device.
Possible to easily guide the user with the correct connection destination even when there are multiple AMP installed nearby (e.g. Hotel).

Power ON the main unit (MCA1120) in advance

(1) Preparation

Connect the USB terminal of the PC and 232C terminal of the main unit (Rear panel)



Need to install the driver matching with the 232C converter cable

Example of the cable USB-232C converter cable

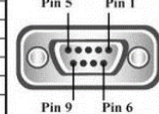
Driver
<https://www.aten.com/global/en/supportcenter/downloads/>
Use driver for UC232A

PLANEX COMMUNICATIONS INC.
URS-03

3.5φ 232C cable

Pin 1	RI
Pin 2	TXD
Pin 3	RXD
Pin 4	DSR
Pin 5	GND
Pin 6	DTR
Pin 7	CTS
Pin 8	RTS
Pin 9	Power Input /DCD

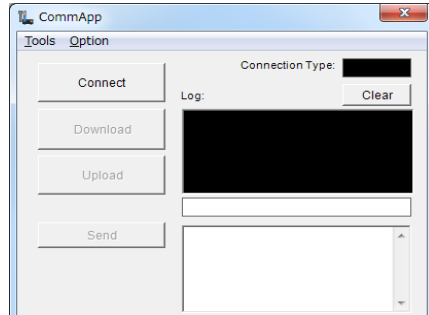
RS232 Pinout (9 Pin Female)



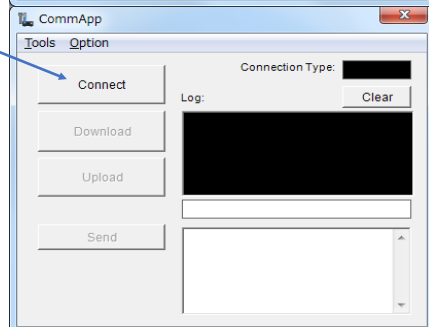
(2) Establish communication

Launch the PC App on your PC

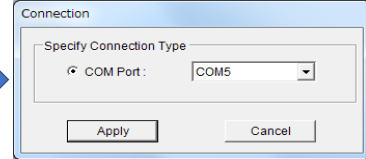
Initial screen



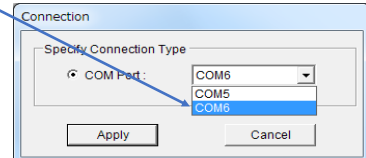
Click "Connect"



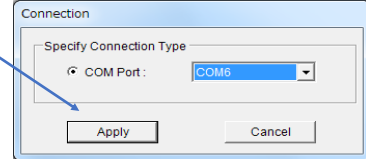
Pop-up window appears



Select the port of the connected USB cable

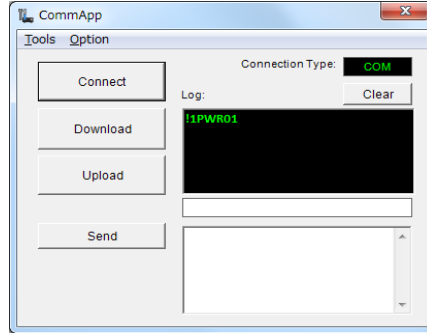


Click "Apply"

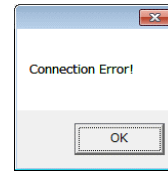


Pop-up window disappears

In case of connection succeed



In case of connection error

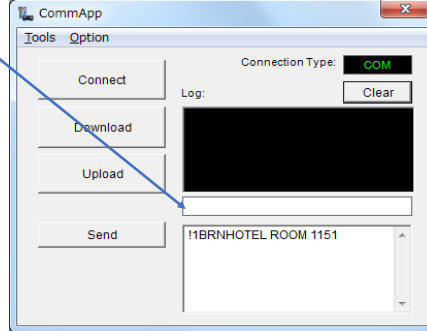


After clicking "OK",

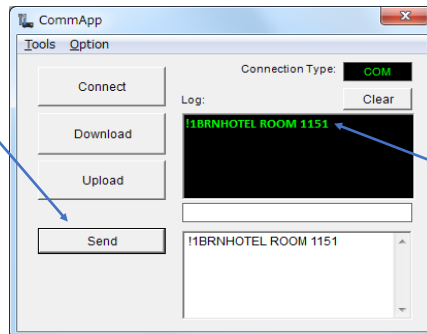
Check cable connection or select another COM port etc. and click on "Apply" again

(3)
Rename

Enter the command code (!1BRN followed by your desired friendly name) in the window



Click "Send"



!1BRN is the fixed phrase

You can enter any desired name by up to 16 alphanumeric characters and symbols from the following table.

In this example, its HOTEL ROOM 1151

Available characters and symbols

(space)	4	H]	q
!	5	I	^	r
"	6	J	_	s
#	7	K	`	t
\$	8	L	a	u
%	9	M	b	v
&	:	N	c	w
'	;	O	d	x
(<	P	e	y
)	=	Q	f	z
*	>	R	g	{
+	?	S	h	
,	@	T	i	}
-	A	U	j	~
.	B	V	k	
/	C	W	l	
0	D	X	m	
1	E	Y	n	
2	F	Z	o	
3	G	[p	

After clicking "Send", reception command from the unit will be displayed

It is OK, if the displayed command is same with the transmitted command

Unplug AC cord

Setting will be completed after AC OFF >>> AC ON

(4)

Confirmation

The name you have set will appear on your smartphone or tablet during Bluetooth pairing.
Connection with the AMP will be established when you choose that name.

Smartphone screen (example)



The name that you renamed

Restore setting

In case of restoring the Bluetooth friendly name to factory default,
unplug the AC cord (=AC OFF) after executing factory default reset.

Factory default reset: To restore all settings to factory default conditions.

(Caution: **All** the settings including the Bluetooth friendly name will be reset back to factory default)

During Power ON, hold down (=long press) the POWER button after setting the following knob to BASS=MAX, TREBLE=MAX, MASTER VOLUME=MIN.

Release the POWER button when the indicator starts to blink in red.



Release POWER button after indicator starts to blink in red light.
Hold down the POWER button for more than 5 seconds.